

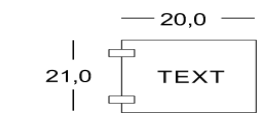


LIONE

Indoor signs made of acid-etched glass with raised characters. Cut-out brass or brushed stainless steel characters applied on the panel. Bespoke font upon request. Decorative strip at the bottom of the sign, matching the finishing of the characters. Wall fixing with screws and studs. Bespoke texts and dimensions, based on specific needs.



Versione



LIONEB



LIONENP



LIONEP



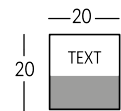
LIONEI



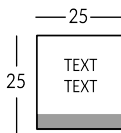
LIONEX



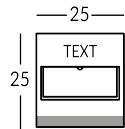
LIONELET



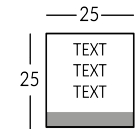
LIONE1



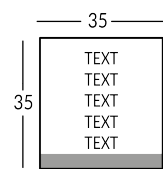
LIONE2



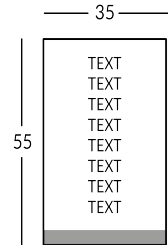
LIONET



LIONE3

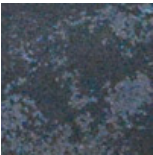


LIONE5

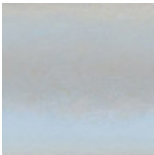


LIONE8

Finiture Metalliche | Metal finishes | Finitions métalliques



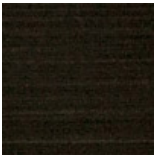
Rough industrial steel finish



Polished stainless steel



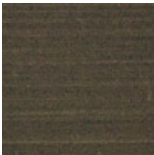
Brushed stainless steel



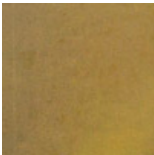
Dark aged brass



Light Bronzed Brass



Dark Bronzed Brass



Industrial brass



Polished brass

