

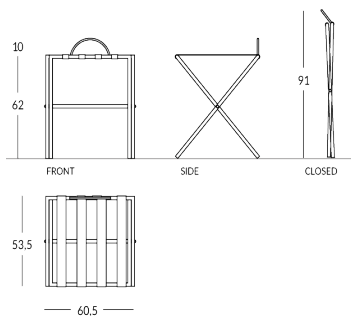


LUG/S

Metal folding luggage rack with backstand. Frame material: metal with round tube. Straps material: real leather, available in different colors. Frame finish: metallic (steel, brass or copper) or painted in any Apir color or in any shade of the RAL color chart. Rubber pads. Foldable frame for a space-saving solution. Height (open): 72cm Height (folded): 91cm Width: 60.5cm Depth (open): 53.5cm Weight: 3.7kg



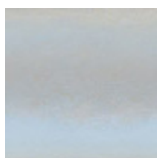
Versione



Finiture Metalliche | Metal finishes | Finitions métalliques



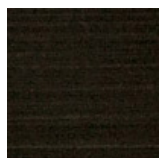
Rough
industrial
steel finish



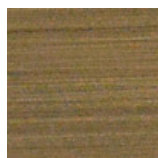
Polished
stainless steel



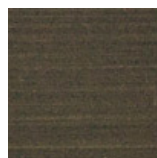
Brushed
stainless steel



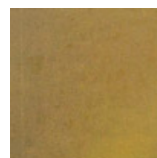
Dark aged
brass



Light Bronzed
Brass



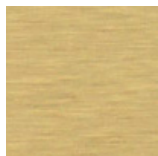
Dark Bronzed
Brass



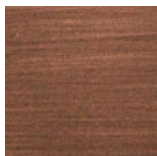
Industrial
brass



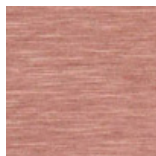
Polished
brass



Brushed
brass

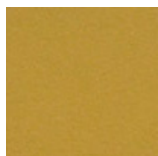


Antique
Brushed
Polished Matt

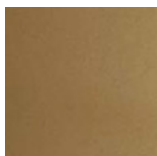


Brushed
Polished
Copper

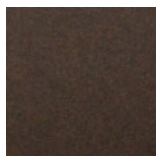
Finiture Verniciate | Painted finishes | Finitions peintes



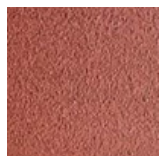
Gold



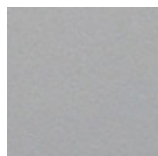
Antique Gold



Bronze



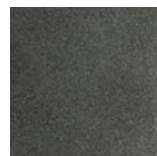
Simil Corten



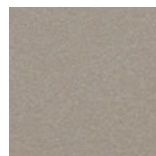
Silver



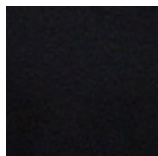
Tortora (Ral
1019)



Canna di
Fucile



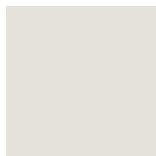
Antique Light



Matt black
(Ral 9005)



Polished
black (Ral
9005)



Matt white
(Ral 9010)



Dark gray
(Ral 7016)

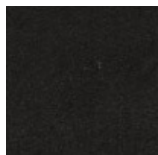


Light grey
(Ral 7042)

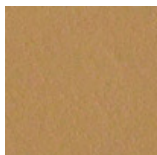


Ral

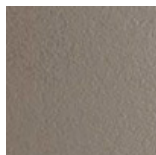
Colore Cinghie | Strap colour | Couleur de courroies



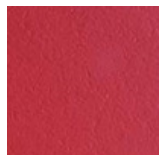
Black leather



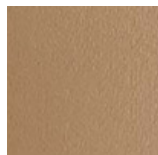
Leather



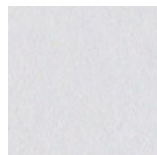
Mud Leather



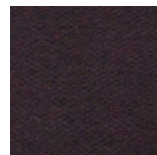
Red leather



Mole leather



White Leather



Dark brown
leather