

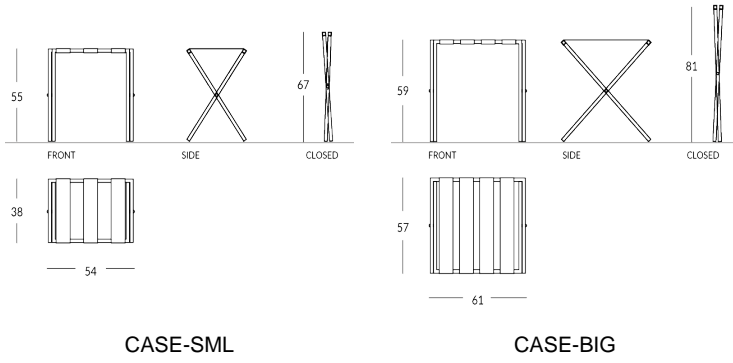


CASE

Customisable folding luggage rack. Frame material: metal with square tube and rubber pads. Straps material: High-Tech fabric or real leather, available in different colours. Strap width: leather 4cm; High-Tech 89mm. Frame finish: metallic (steel or brass) or painted in any Apir colour or in any shade of the RAL colour chart. Foldable frame for a space-saving solution. SML size Height (open): 55cm Height (folded): 67cm Width: 54cm Depth (open): 38cm Weight: 4.2kg BIG size Height (open): 59cm Height (folded): 81cm Width: 61cm Depth (open): 57cm Weight: 4.2kg



Versione



CASE-SML

CASE-BIG

Finiture metalliche | Metal finishes | Finitions métalliques



Polished stainless steel

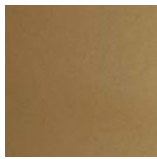


Polished brass

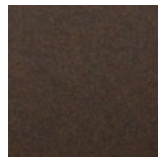
Finiture verniciate | Painted finishes | Finitions peintes



Gold



Antique Gold



Bronze



Simil Corten



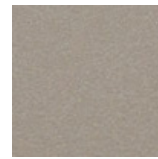
Silver



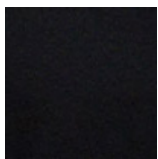
Tortora (Ral 1019)



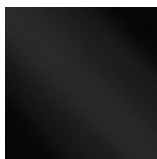
Canna di Fucile



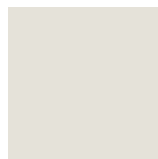
Antique Light



Matt black (Ral 9005)



Polished black (Ral 9005)



Matt white (Ral 9010)



Dark gray (Ral 7016)

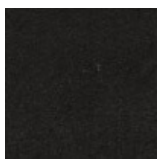


Light gray (Ral 7042)

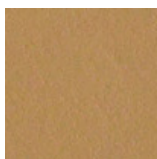


Ral

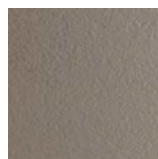
Colore cinghie cuoio | Strap colour | Couleur de courroies



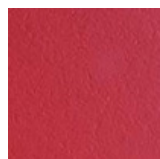
Black leather



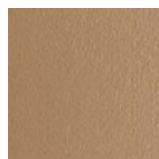
Leather



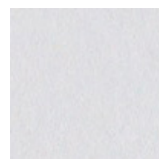
Mud Leather



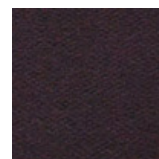
Red leather



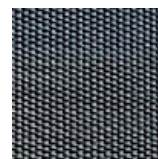
Mole leather



White Leather



Dark brown leather



Hi-Tech Grey leather

