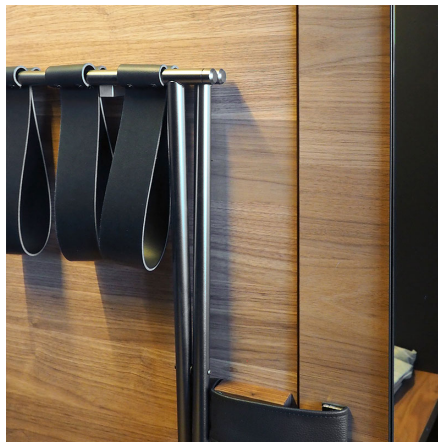
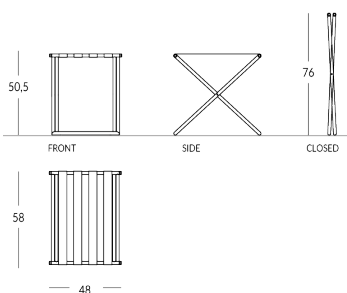


# ISLA

Folding luggage rack with leather straps. Frame material: metal with round tube. Straps material: real leather, available in different colors. Frame finish: metallic (steel or brass) or painted in any Apir color or in any shade of the RAL color chart. Foldable frame for a space-saving solution. Height (open): 50.5cm Height (folded): 76cm Width: 58cm Depth: 48cm Weight: 4kg



## Versione



## Finiture Metalliche | Metal finishes | Finitions métalliques



Rough industrial steel finish



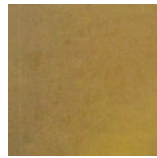
Polished stainless steel



Light Bronzed Brass



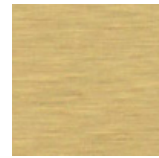
Dark Bronzed Brass



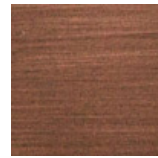
Industrial brass



Polished brass

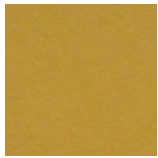


Brushed brass

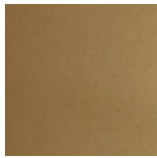


Antique Brushed Polished Matt

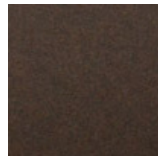
## Finiture Verniciate | Painted finishes | Finitions peintes



Gold



Antique Gold



Bronze



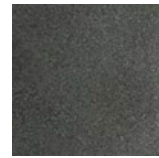
Simil Corten



Silver



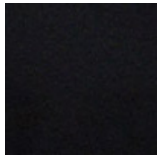
Tortora (Ral 1019)



Canna di Fucile



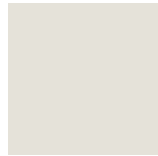
Antique Light



Matt black (Ral 9005)



Polished black (Ral 9005)



Matt white (Ral 9010)



Dark gray (Ral 7016)



Light grey (Ral 7042)

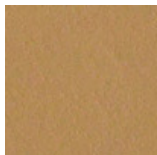


Ral

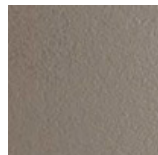
## Colore Cinghie Cuio | Strap colour | Couleur de courroies



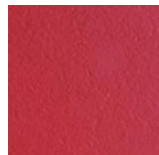
Black leather



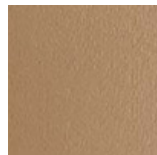
Leather



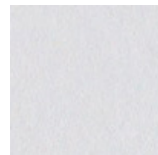
Mud Leather



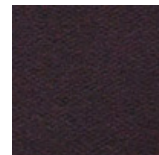
Red leather



Mole leather



White Leather



Dark brown leather