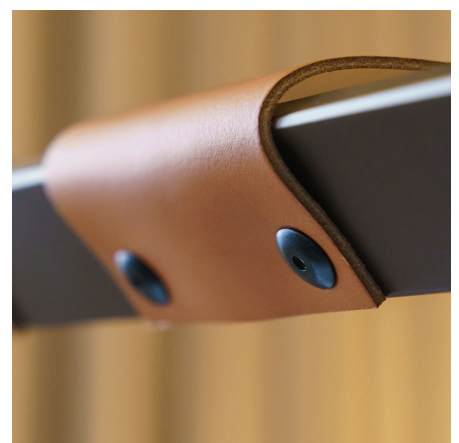


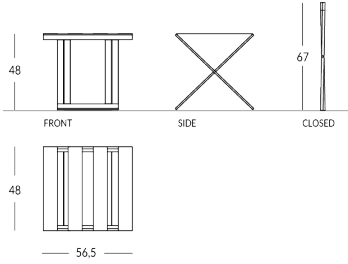


SUITTY

Customisable folding luggage rack. Frame material: metal with flat tube. Straps material: High-Tech fabric or leather, available in different colours. Frame finish: metallic (steel, brass or copper) or painted in any Apir colour or in any shade of the RAL colour chart. Optional rubber pads. Foldable frame for a space-saving solution. Height (open): 48cm Height (folded): 67cm Width: 56.5cm Depth (open): 48cm Weight: 4.85kg



Versione



SUITTY-SML

Finiture metalliche | Metal finishes | Finitions métalliques



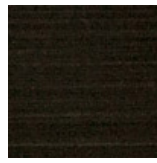
Rough industrial steel finish



Polished stainless steel



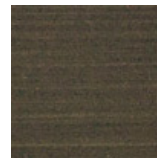
Brushed stainless steel



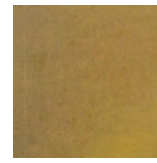
Dark aged brass



Light Bronzed Brass



Dark Bronzed Brass



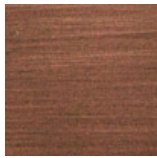
Industrial brass



Polished brass



Brushed brass

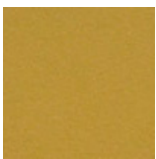


Antique Brushed Polished Matt

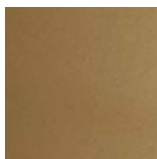


Brushed Polished Copper

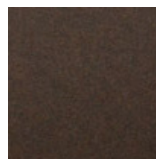
Finiture verniciate | Painted finishes | Finitions peintes



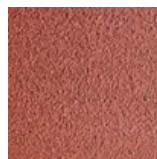
Gold



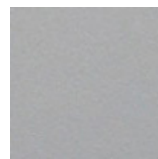
Antique Gold



Bronze



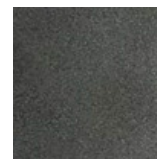
Simil Corten



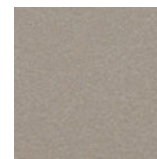
Silver



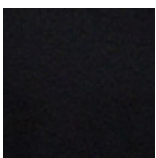
Tortora (Ral 1019)



Canna di Fucile



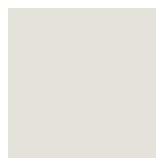
Antique Light



Matt black (Ral 9005)



Polished black (Ral 9005)



Matt white (Ral 9010)



Dark gray (Ral 7016)

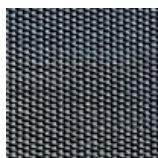


Light grey (Ral 7042)

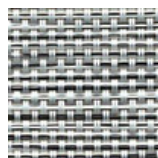


Ral

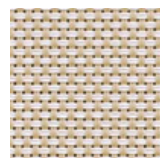
Colore cinghie High-Tech | Strap colour | Couleur de courroies



Hi-Tech Grey



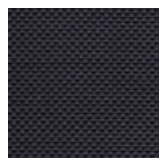
Hi-Tech Salt



Hi-Tech Sand



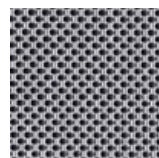
Hi-Tech
Safari



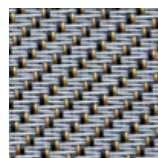
Hi-Tech Deep
Black



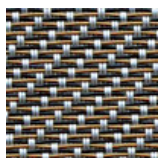
Hi-Tech White
Snow



Hi-Tech
Ipnotic Grey



Hi-Tech
Ethnic Silver



Hi-Tech
Ethnic Bronze