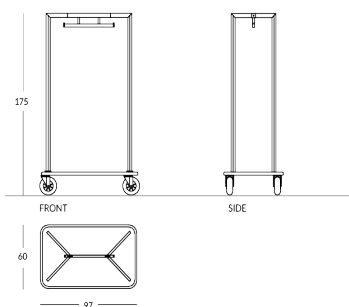


## GRECO

Metal luggage cart: rectangular tube, geometric profile. Frame with integrated clothes hanger Available finishes: - painted in any Apir color or in any shade of the RAL color chart - brushed steel Base with metal box section and plastic coating featuring a wrap-around bumper and a special carpet. The carpet can be laser engraved to apply the name or the logo of your hotel. Four wheels: two fixed and two swiveling. Height: 175cm Width: 60 cm Depth: 97cm Weight: 34.60kg



### Versione

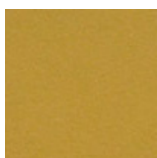


## Finiture Metalliche | Metal finishes | Finitions métalliques

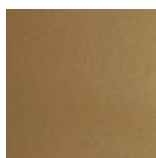


Brushed  
stainless steel

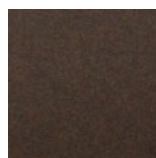
## Finiture Verniciate | Painted finishes | Finitions peintes



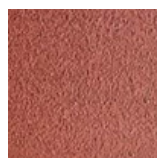
Gold



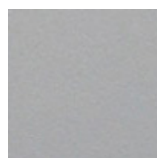
Antique Gold



Bronze



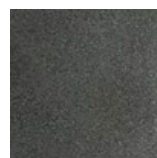
Simil Corten



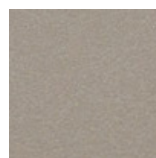
Silver



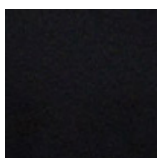
Tortora (Ral  
1019)



Canna di  
Fucile



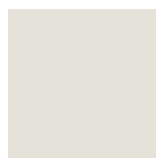
Antique Light



Matt black  
(Ral 9005)



Polished  
black (Ral  
9005)



Matt white  
(Ral 9010)



Dark gray  
(Ral 7016)



Light grey  
(Ral 7042)



Ral