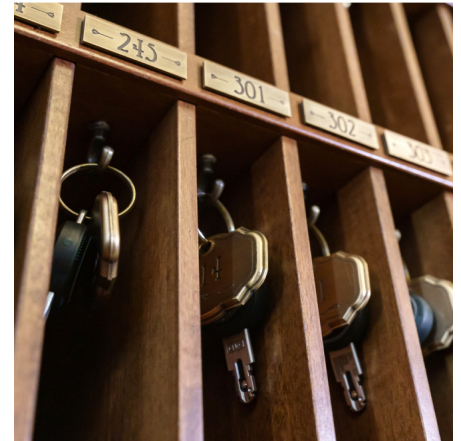
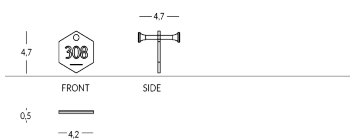


HEXAGON

Brass key fobs, hexagonal shape. Text engraving: customised option with engraving of the name of the hotel and room number. Keyring included. Weight: 160gr



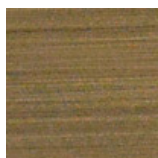
Versione



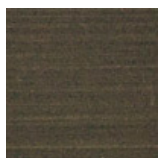
Finiture Metalliche | Metal finishes | Finitions métalliques



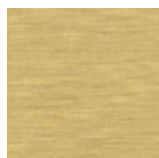
Brushed
stainless steel



Light Bronzed
Brass



Dark Bronzed
Brass



Brushed
brass