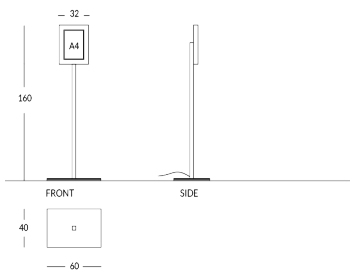


# LONDBS

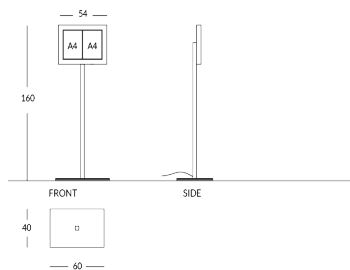
Illuminated freestanding outdoor menu display case, with hermetic key lock. Available formats: one A4, 2 side-by-side A4, 3 side-by-side A4. Display case material: 316 stainless steel or brass, glass window. Metal finishes: polished steel, brushed steel or polished brass. Frame finish: painted in any Apir colour or in any shade of the RAL colour chart. Possibility to customise the display case with the restaurant logo or a text; font and colour of your choice. Height: 160cm Rectangular base: 60 x 40cm Available sizes: LONDBS-SML 1 A4 32 x 41cm; LONDBS-MED 2 A4 54 x 41cm; LONDBS-BIG 3 A4 75 x 41cm. Weight: LONDBS-SML: 23kg; LONDBS-MED: 23,8kg ; LONDBS-BIG: 36kg. Horizontal layout.



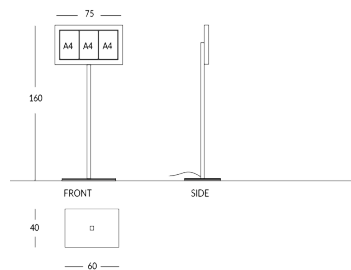
## Versione



LONDBS-SML



LONDBS-MED



LONDBS-BIG

## Finiture Metalliche | Metal finishes | Finitions métalliques



Polished  
stainless steel

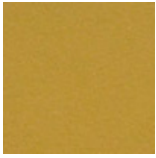


Brushed  
stainless steel

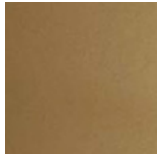


Polished  
brass

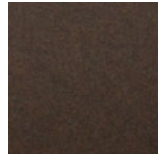
## Finiture Verniciate | Painted finishes | Finitions peintes



Gold



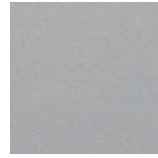
Antique Gold



Bronze



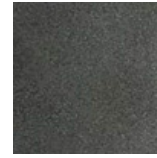
Simil Corten



Silver



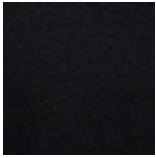
Tortora (Ral  
1019)



Canna di  
Fucile



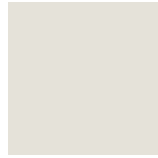
Antique Light



Matt black  
(Ral 9005)



Polished  
black (Ral  
9005)



Matt white  
(Ral 9010)



Dark gray  
(Ral 7016)



Light gray  
(Ral 7042)



Ral