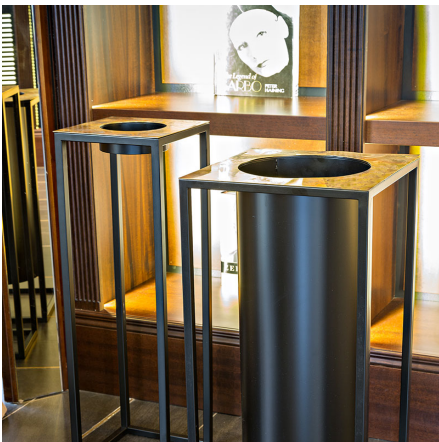
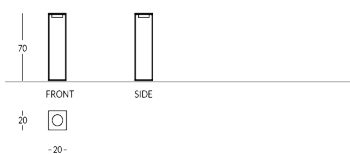


## FRIEDA-CEN

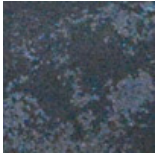
Metal ashtray of the Frieda collection. Squared perimeter with four metal bars and upper ashtray shelf. Available finishes: - metallic: brass, steel or copper effect - painted in any Apir colour or in any shade of the RAL colour chart Protective pads at the base. One bag of fine sand included. Height: 70cm Square base side: 20cm Weight: 2.80 kg



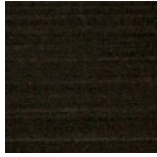
### Versione



## Finiture Metalliche | Metal finishes | Finitions métalliques



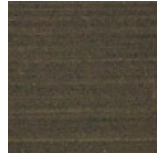
Rough industrial steel finish



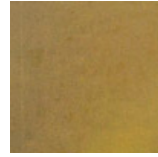
Dark aged brass



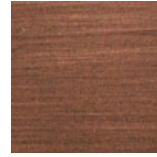
Light Bronzed Brass



Dark Bronzed Brass

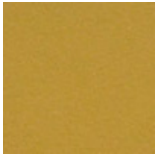


Industrial brass

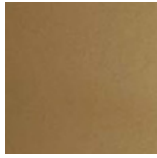


Antique Brushed Polished Matt

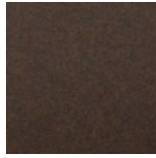
## Finiture Verniciate | Painted finishes | Finitions peintes



Gold



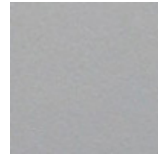
Antique Gold



Bronze



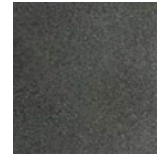
Simil Corten



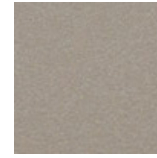
Silver



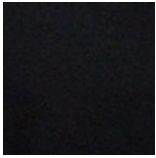
Tortora (Ral 1019)



Canna di Fucile



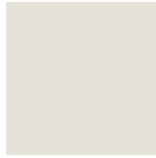
Antique Light



Matt black (Ral 9005)



Polished black (Ral 9005)



Matt white (Ral 9010)



Dark gray (Ral 7016)



Light gray (Ral 7042)



Ral